

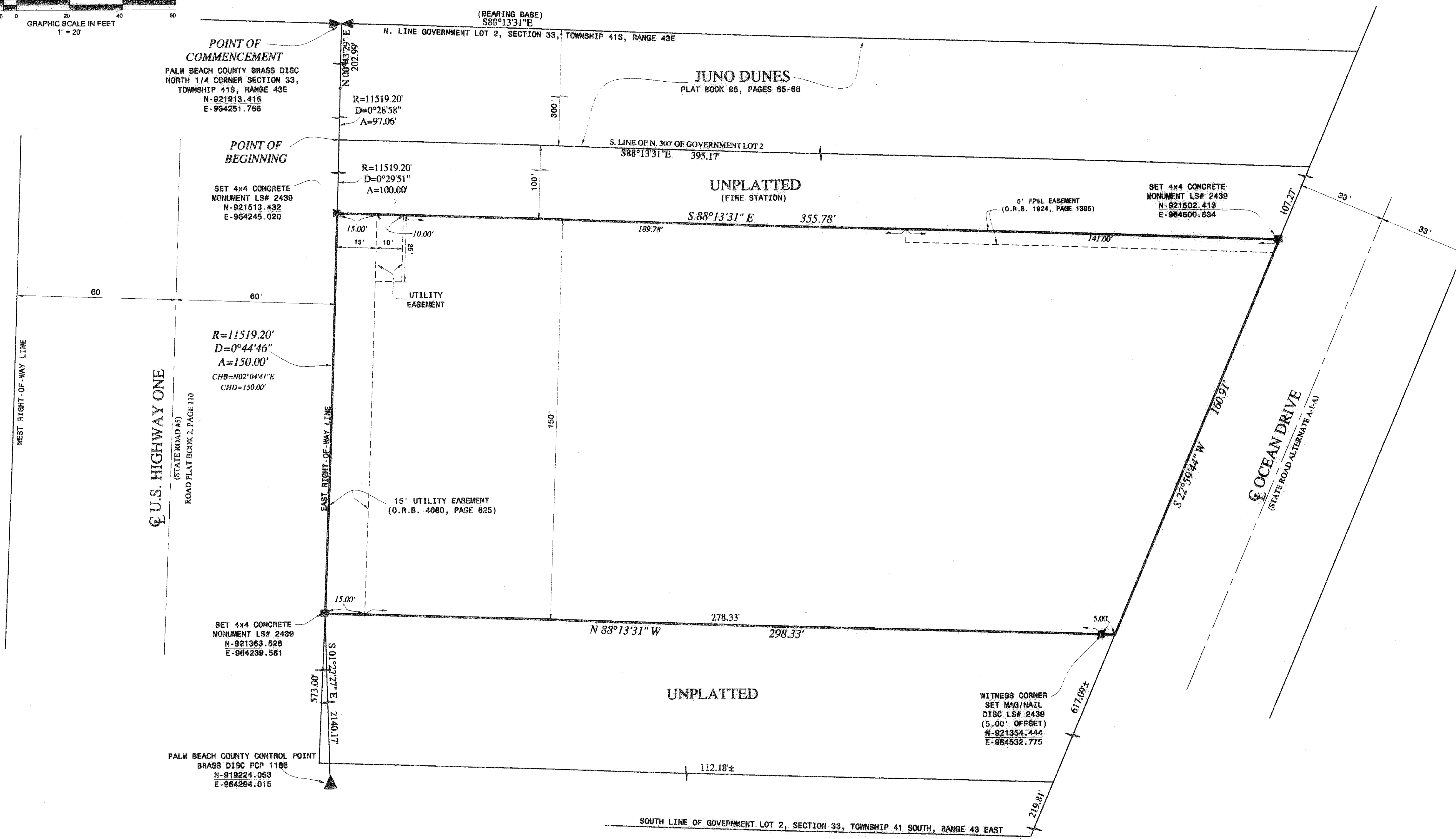
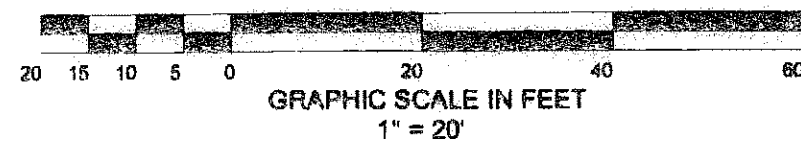
PALMS OF JUNO BEACH

A PARCEL OF LAND LYING IN GOVERNMENT LOT 2, SECTION 33, TOWNSHIP 41 SOUTH, RANGE 43 EAST,
JUNO BEACH, PALM BEACH COUNTY, FLORIDA

JANUARY 2008

LEGEND

- R - RADIUS
- D - DELTA ANGLE
- A - ARC LENGTH
- C - CENTERLINE
- CHB - CHORD BEARING
- CHD - CHORD DISTANCE
- PCP - PERMANENT CONTROL POINT



SHEET 2 OF 2
DAILEY
 AND ASSOCIATES, INC.
 Surveying and Mapping
 112 N. U.S. Highway No. 1
 Tequesta, FL 33489
 Phone: (561) 746-8424
 BUSINESS LICENSE: LBM 2799